

**ELECTRICAL DATA**

- Current at AMB. 5.5 A at 20° / 4 A at 70°
- Contact resistance <math>\leq 15\text{m}\Omega</math> according to DIN 41640 Teil 4 test 2a
- Insulation resistance >10 M $\Omega$  according to DIN 41640 teil 7 test 3a
- TEST VOLTAGE according to DIN 41640 teil 21
- contact/contact 1550V eff
- contact/ground 1550V eff

**MECHANICAL DATA**

- Insertion force <math>\leq 60\text{N}</math>
- Mechanical endurance -class 1 500 matings unmatings according to DIN41640 teil 21
- class 2 400 matings unmatings according to DIN41640 teil 21

- Material insulator Polyester UL94V0
- Material contacts Bronze
- Medium power contact: Gold over nickel on contact area. Lead-free on termination.
- High power contact: Silver over nickel on active and on terminalson area

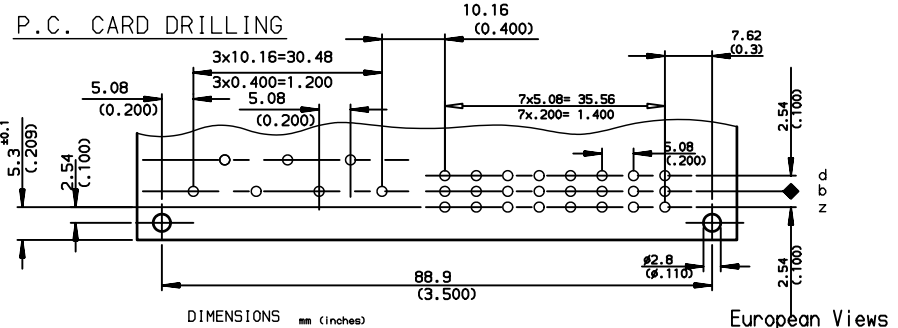
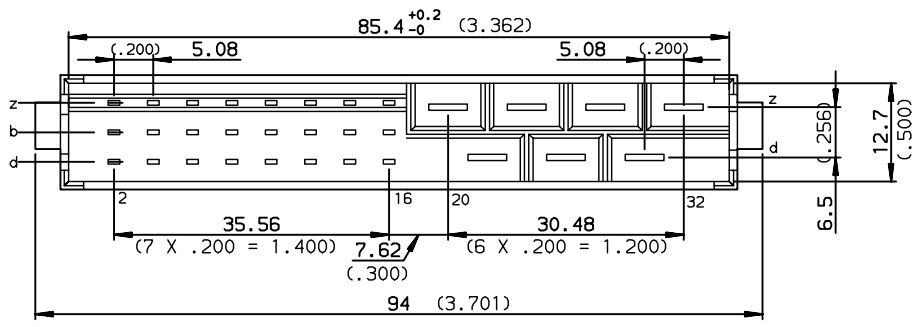
- Schock <math>\leq 40\text{ma}</math> according to DIN 41640 Teil 14 test 6c
- Vibration -class 1 10-2000Hz/20g according to DIN 41640 Teil 15
- class 2 10-500Hz/5g according to DIN 41640 Teil 15

**ENVIRONMENTAL DATA**

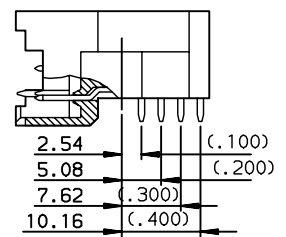
- Climatic category According to DIN 41612
- Corrosion According to DIN 41612

**NOTE RoHS INFORMATION**

- The "LF" products meet European Union Directives and other country regulations as described in 65-22-08.
- The housing will withstand exposure to 260°C peak temperature for 3.5 seconds in a wave solder application with a 1.6mm minimum thick circuit board.
- For the right angled versions, like the current leaded versions, it's recommended to use high temperature adhesive or metallic device, to protect the nearest plastic part in contact with of the solder wave, to avoid any visual plastic deterioration.



**TERMINATION**



LEAD-FREE PART-NUMBER	5159	002	31	23	4	111	LF
MIXED STYLE F24/H7							
NUMBER OF CONTACTS							
TERMINATION	24 angled spILls 4 row + 7 foston						
PERFORMANCE CLASS							
DIN 41612 class 2	= = = = =						
DIN 41612 class 1	= = = = =						
CONTACT TERMINATION	Angled spILls 2.54 X 5.08						
LEAD-FREE							

rev	ecn no	dr	date
A	-	-	-
B	-	-	-
C	LS05-0119	-	2005/12/13
D	LS05-0119	LGO	2006/02/21
E	LS06-0097	LGO	2006/02/26
F	LS07-0288	LGO	2007/11/19
-	-	-	-

www.fciconnect.com			surface ISO 1302 ✓	tolerance std ISO 406 ISO 1101	projection mm
TOLERANCES UNLESS OTHERWISE SPECIFIED					
Dr	MPESSON	2006/02/21	ANGULAR	0.X ±0.1	size A3
Eng	MPESSON	2006/02/21	LINEAR	0.XX ±0.1	Scale 1.5
Chr	LEGARE	2006/02/21	0.XX' ±2'	0.XXX ±0.1	ECN LS07-0288
Appr	LEGARE	2006/02/21	Product family	DIN POWER 5159	Spec ref -
FCI			title PLUGS-MEDIUM HIGHT POWER		Rev. F
			MIXED STYLE F24/H7		dwg no C01-5159-0041
			catalog no -		sheet 1 of 1